

# Invest in Prevention & Do Less Intervention™

with a **Science-Based**  
*Comprehensive Phonics Curriculum • PK-2*



We partner with schools and districts to transform PK-2 literacy by providing a science-based, research-proven curriculum that guarantees all students meet grade-level expectations by **prioritizing prevention instead of intervention.**

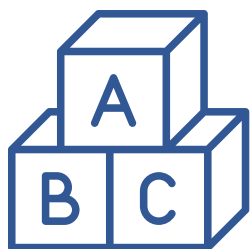
The CAPIT Curriculum is easy to implement, and its digital platform provides real-time, actionable data on student performance, empowering teachers and administrators to **ensure all students achieve reading proficiency in Tier 1.**



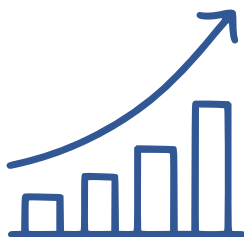
# Teach students to **decode** and **spell** without confusion, rules, or memorization.



CAPIT utilizes cutting-edge research in reading science and cognitive science to deliver a groundbreaking, streamlined approach to early literacy instruction. We concentrate on **proven techniques that significantly enhance young learners' foundational skills.**

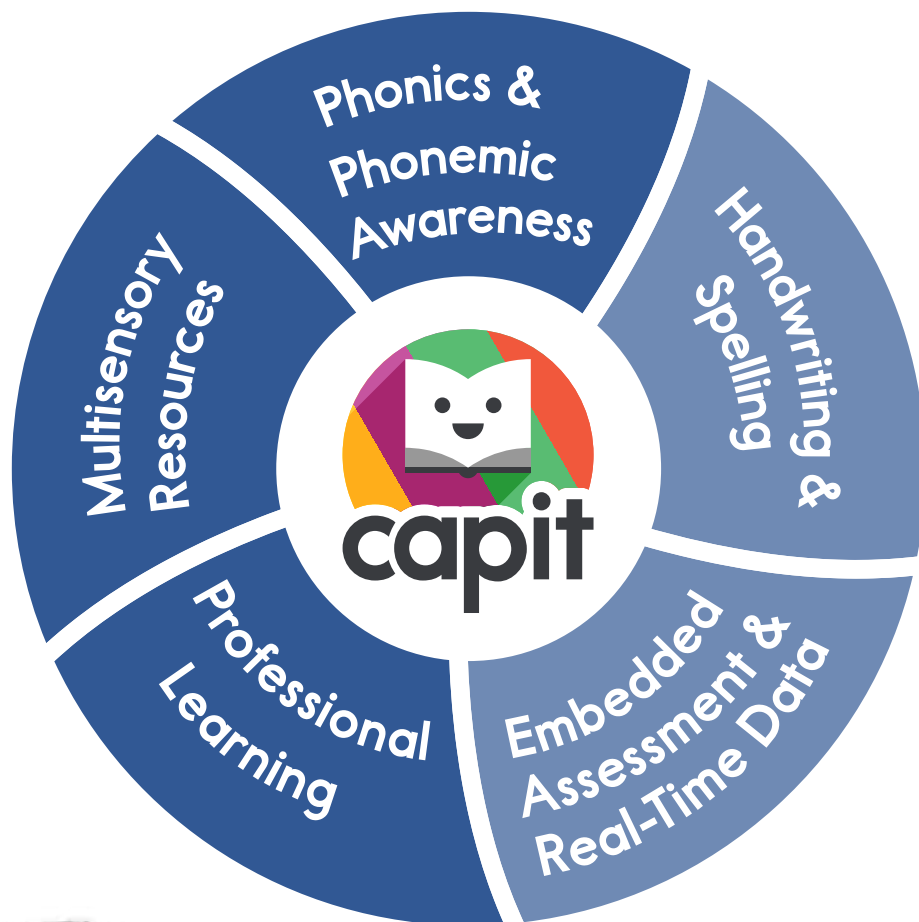


Our **alignment with the latest research enables students to exceed grade-level expectations.** Preschool students gain a head start by entering Kindergarten at least one year above grade level. Kindergarten students typically master letter-sound relationships within three months, start decoding and encoding before January, and learn to read and spell complete sentences with punctuations and capital letters before the end of the year. First-grade students learn to read and spell digraphs and diphthongs, achieving success without navigating complex rules and memorization.



Independent research validates that the CAPIT Reading Curriculum **accelerates progress and boosts reading test scores for all students,** including special education and English language learners.

# All-in-One Solution





The CAPIT Reading Curriculum offers an **all-in-one comprehensive, science-based literacy solution** addressing every facet of early literacy learning:

### Phonics & Phonemic Awareness Curriculum

Our PK-2 Reading Curriculum enables teachers to deliver **systematic and explicit instruction in reading, spelling, and handwriting.**

### Handwriting & Spelling

CAPIT Reading emphasizes handwriting and spelling to bolster foundational literacy skills through **tactile learning and meaningful writing.**

### Embedded Assessments & Real-Time Data

Our digital platform's integrated assessments **continuously monitors student progress,** generating real-time, actionable data for teachers, principals, and district leaders to inform instruction.

### Professional Learning

Teachers become skilled phonics instructors through our science-based, hands-on CAPIT Reader Professional Development. This 14-hour PD program **immerses educators in reading science, cognitive science, and instructional best practices.**

### Multisensory Resources

The CAPIT Multisensory Kit™ **transforms classrooms into Sound-to-Print Environments™,** providing teachers with the necessary tools for whole and small group instruction and support for Tier-2 and Tier-3 students.

# Incorporating Reading Science into Early Literacy Instruction

CAPIT Reading is grounded in the most recent findings from reading research, learning science, and cognitive science. Our evidence-based **PK-2 Reading Curriculum is designed to foster reading proficiency in all students.**

## What Reading Science Says

**Phonics is the most effective method** for teaching beginners to decode an alphabetic writing system.

Students should learn a fundamental algorithm that allows them to **decode and spell words.**

Segmenting words into the smallest units of sound (phonemes) proves **more effective than memorizing sight words.**

Decoding should be taught **directly, explicitly, and with maximum guidance.**

## What CAPIT Reading Does

CAPIT is a phonics-based program that instructs students on the **relationships between letters and their corresponding speech sounds.**

CAPIT Reading explicitly teaches students **all the sounds in the English language and their associated spelling patterns.**

With CAPIT, students do not rely on memorization or sight-reading. Instead, they learn to decode each word **using CAPIT's sound and spelling algorithm.** Over time, they efficiently and fluently make these **connections without conscious effort.**

Within the CAPIT instructional framework, teachers explicitly **present each new concept and demonstrate its application,** helping students understand what successful performance entails. As students participate in independent practice, teachers diligently monitor their progress, providing support and targeted questions as necessary. Our framework **emphasizes students learning to read from teachers** rather than relying on digital applications.

## What Reading Science Says

Effective phonics instruction is both **systematic and explicit**.

Spelling words results in **more consistent orthographic learning outcomes** compared to reading alone.

Phoneme manipulation with letters is **three times more effective** in helping Tier 1 and at-risk readers acquire phonemic awareness than instruction without letters.

Visual mnemonics aid children in **memorizing the relationship between letters and sounds**.

Cognitive Load Theory suggests that the elimination of unnecessary information (extraneous cognitive load) during the learning process aids in the transfer of information from working memory to long-term memory.

## What CAPIT Reading Does

The CAPIT Scope and Sequence methodically **introduces each phonics skill and print convention in an order that resonates with young readers**. CAPIT presents only one concept at a time, requiring students to demonstrate proficiency before progressing to a new concept. Furthermore, students receive explicit, direct instruction on reading and spelling.

When CAPIT introduces a new skill, students spell 10 words, 10 phrases, or 10 sentences incorporating the new with previously-learned skills. These spelling exercises **enable students to immediately apply their newly acquired knowledge**.

CAPIT Reading consistently incorporates letters from the outset of the program. As students hear a phoneme, they are also shown the corresponding letter, **reinforcing the connection between sounds and their written forms**.

CAPIT offers a visual mnemonic for each lowercase and uppercase letter. These mnemonics look and sound like their associated letters, **facilitating mental connections for students**. Through extensive testing with diverse student groups, we selected the most **effective visual mnemonics to ensure optimal learning outcomes**.

We designed CAPIT with Cognitive Load Theory in mind. Unnecessary information that could increase students' extraneous cognitive load, such as virtual worlds, animated characters, and game-like elements, has been intentionally removed. **The CAPIT Reading Curriculum is "100% Learning 100% of the Time."**



## CAPIT Reading has earned an ESSA Level 2 designation.

### Tier 1

An independent research study discovered that students utilizing the CAPIT Reading Curriculum exhibited **accelerated progress and enhanced reading test scores** by up to 29% within six months, achieving an ESSA Level 2 designation.

### ELL and SPED

Findings show that the CAPIT Reading Curriculum was as effective on Special Education (SPED) and English Language Learners (ELL) students.

Source: <https://eric.ed.gov/?id=ED621927>





# Putting Reading Science into Practice

## Improved Curriculum that Makes Sense

From a traditional perspective, the English language is a chaotic tangle of irregularities. But CAPIT's Sound-to-Print orientation brings order to chaos, making English logical and decodable. Our sound and spelling algorithm systematically shows students how to decode every word in the English language. **Our method is so effective, you can transform your PK-2 reading instruction in just 30 minutes a day.**

## Embedded Assessments Generate Actionable Data

Starting from Kindergarten, students complete various integrated assessments to demonstrate mastery of newly acquired skills. As CAPIT is a digital curriculum, **schools and districts gain real-time insights into teachers' instruction, lesson frequency, and student progress.** Rich data enables educators to promptly identify and address learning gaps rather than relying on mid-year assessment data. Consequently, **CAPIT helps ensure more students attain grade-level reading proficiency within Tier 1.**

### Real-time insights into



Teachers' instruction



Lesson frequency



Student progress

## Teacher-Led Reading Instruction

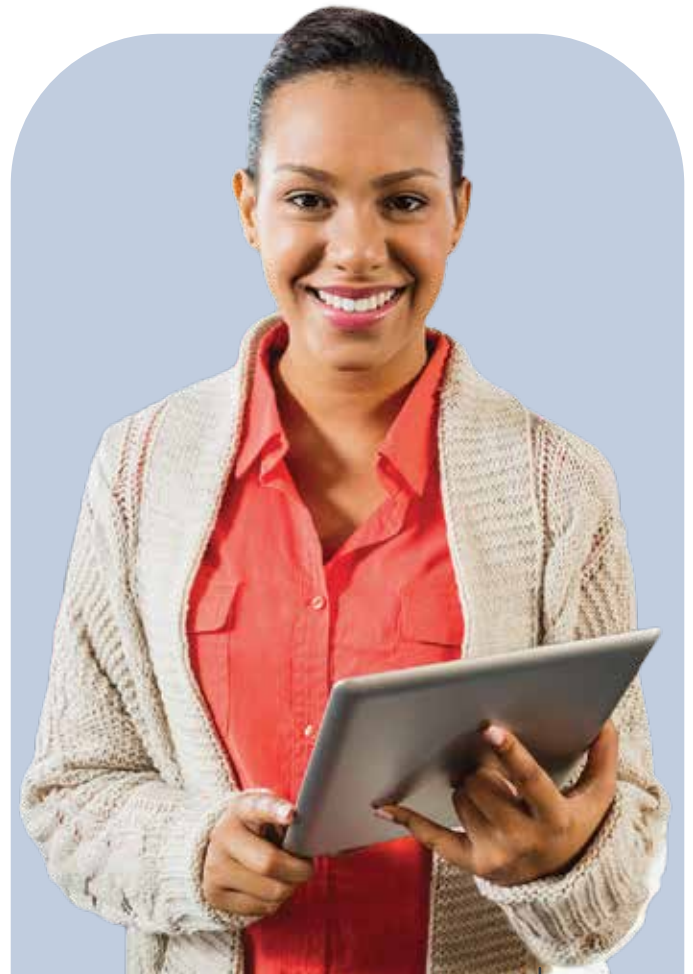
CAPIT differs from most digital programs because it keeps teachers front and center. **Human interaction is critical to effective instruction, and our approach allows teachers to play an active role in student learning.** Each lesson begins with teacher-led instruction in a 10- to 15-minute whole-group or small-group session. Also, if a student makes three errors in a row while working on the platform, our system alerts the teacher to step in, diagnose the problem, and provide support.

## Streamlined Lessons for Efficient Teaching

CAPIT eliminates the need for educators to navigate bulky teacher guides or spend hours preparing lessons. Our intuitive digital platform **simplifies the process by providing clear guidance on teaching** each foundational skill explicitly and systematically.

## See the Difference

Whether you're searching for a supplementary phonics program based on the Science of Reading or a new data-rich technology solution to literacy instruction, we're here to help. Let us show you how CAPIT Reading can **accelerate your students' reading achievement and support your teachers' literacy instruction.** Contact us at [info@capitlearning.com](mailto:info@capitlearning.com) to request a demo of our digital curriculum, professional development offerings, and classroom resources.



# The CAPIT Multisensory Kit™

## Creating a Sound-to-Print Environment™ in PK-2 Classrooms

The **CAPIT Multisensory Kit™** transforms traditional spaces into dynamic **Sound-to-Print Environments™**. This kit offers educators unique tools that enable effective instruction for both whole classes and small groups. Additionally, it provides targeted resources for supporting Tier-2 and Tier-3 students, ensuring that all learners have the opportunity to excel.



## Kit Includes

### Sound and Spelling Cards

Our **Sound-to-Print** approach enables teachers to create a Sound Wall to teach and review all 40+ Phonemes (Sounds) and 180+ Spelling Patterns of the English language.

### Teacher Cards

Our unique **CAPIT Visual Mnemonics** enable teachers to teach new sounds, review old sounds, and conduct various phonics activities with individual students, small groups, or the entire class.

### Evaluation Cards

Our unique **CAPIT Visual Mnemonics** equip teachers with a tool to quickly evaluate students and easily differentiate their instruction to close the learning gap.

### CAPIT Alphabet Box

Connecting Sound-to-Print™ with Magnetic Letters and Science-Based Visual Mnemonics™.

### Alphabet Posters

Displaying the uppercase and lowercase letters and their corresponding **CAPIT Visual Mnemonics**.



*CAPIT has increased our students' engagement and energized them to work independently. Most importantly, it has also kindled a deep love for reading and literacy.*

*- Dr. Bertrand Tchoumi, Principal, NYC Schools, NY*

*CAPIT has enhanced our student growth in phonics and phonemic awareness, with more students reading at grade level in grades K & 1. CAPIT has also helped our ELL and ESE students. We couldn't be happier with CAPIT.*

*- Chelsea Smith, Principal K-5, Palm Beach Maritime Academy, FL*

*CAPIT helps students to quickly recognize letters and sounds, expediting students' progress in reading. Regular engagement with CAPIT has been linked with marked improvement in students' reading scores.*

*- Kendra Davis, Principal, Mariam Boyd Elementary, Warren County, NC*

*The teachers and students love the program. CAPIT will have an integral part of our school for years to come.*

*- Jillian Smith, Curriculum Coordinator, Lifeline Education Charter School, Compton, CA*



Meet with a Partnership Manager to review your early literacy objectives and explore how CAPIT Reading can support your efforts.

**Schedule a time to**

**meet: [www.capitlearning.com/demo](http://www.capitlearning.com/demo)**

**Contact us:**

310-935-3855

855-66-CAPIT

[info@capitlearning.com](mailto:info@capitlearning.com)

